

MARINER SANDS PLAT NO. 5

BEING A TRACT OF LAND LYING IN SECTION 32, TOWNSHIP 38 SOUTH, RANGE 42 EAST, MARTIN COUNTY, FLORIDA.
BEING A PART OF THE MARINER SANDS P.U.D.

I, LOUISE V. ISAACS, Clerk of the Circuit Court of Martin County, Florida, hereby certify that this plat was filed for record in Plat Book 10, Page 48, Martin County, Florida, public records, this day of _____, 1986

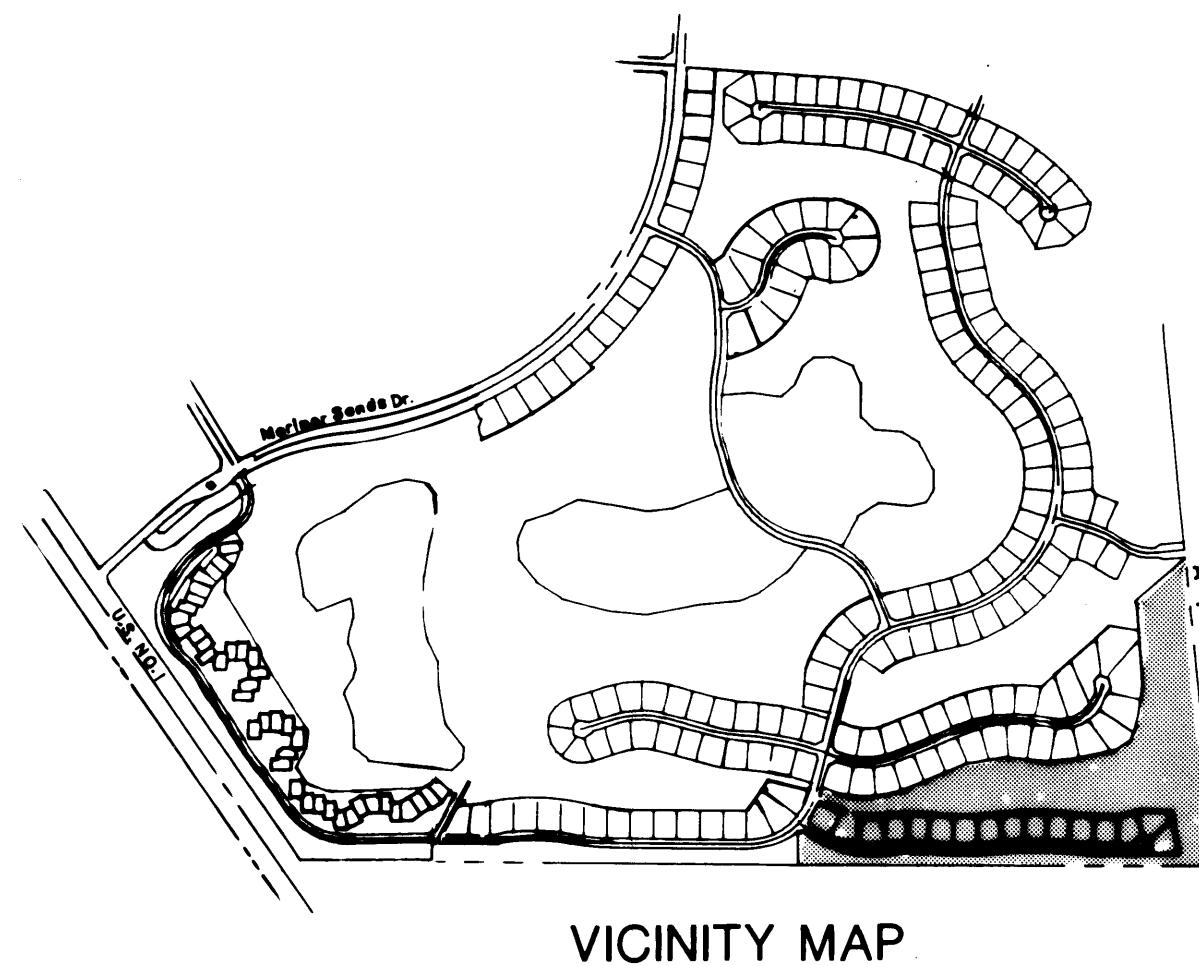
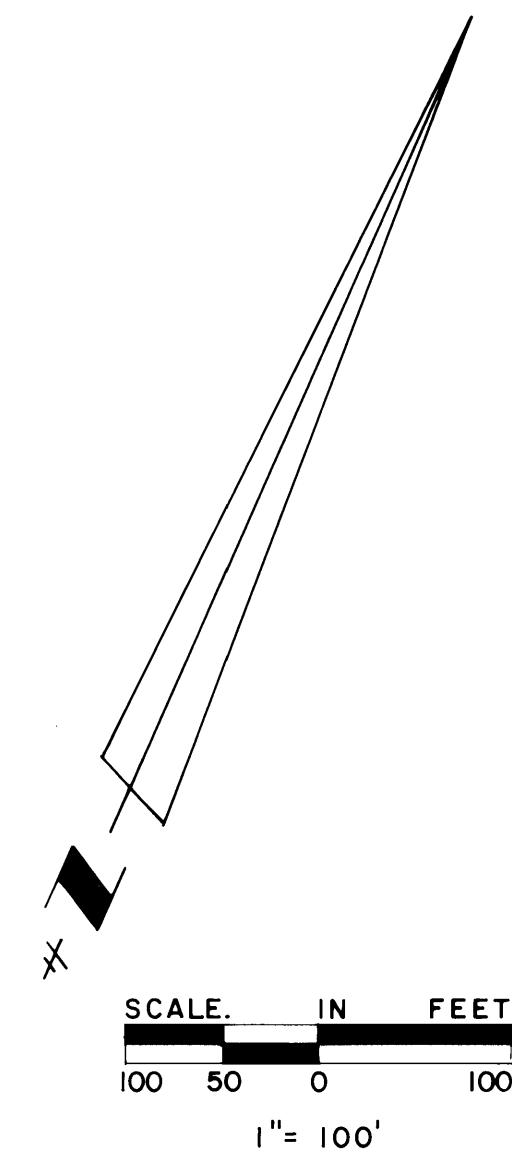
LOUISE V. ISAACS, CLERK
CIRCUIT COURT
MARTIN COUNTY, FLORIDA

BY: _____
Deputy Clerk

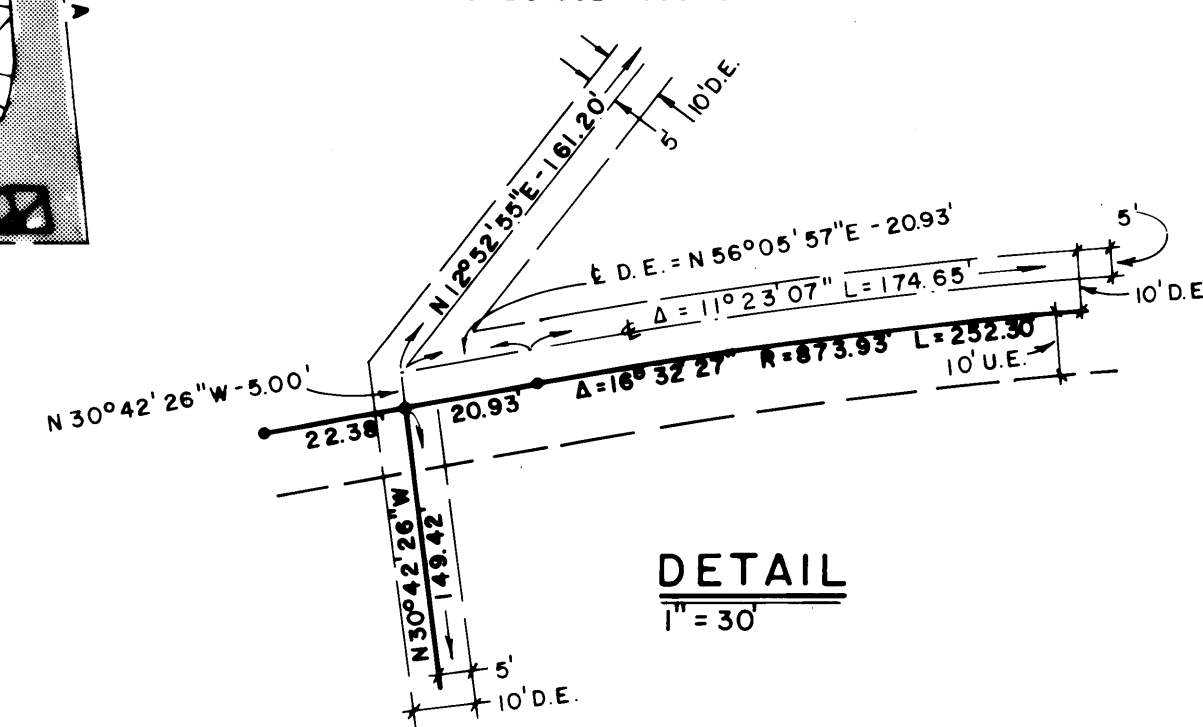
File No. _____

JULY 1986
SHEET 2 OF 2 SHEETS

Hutcheon Engineers
CIVIL ENGINEERS & SURVEYORS
WEST PALM BEACH
BELLE GLADE STUART

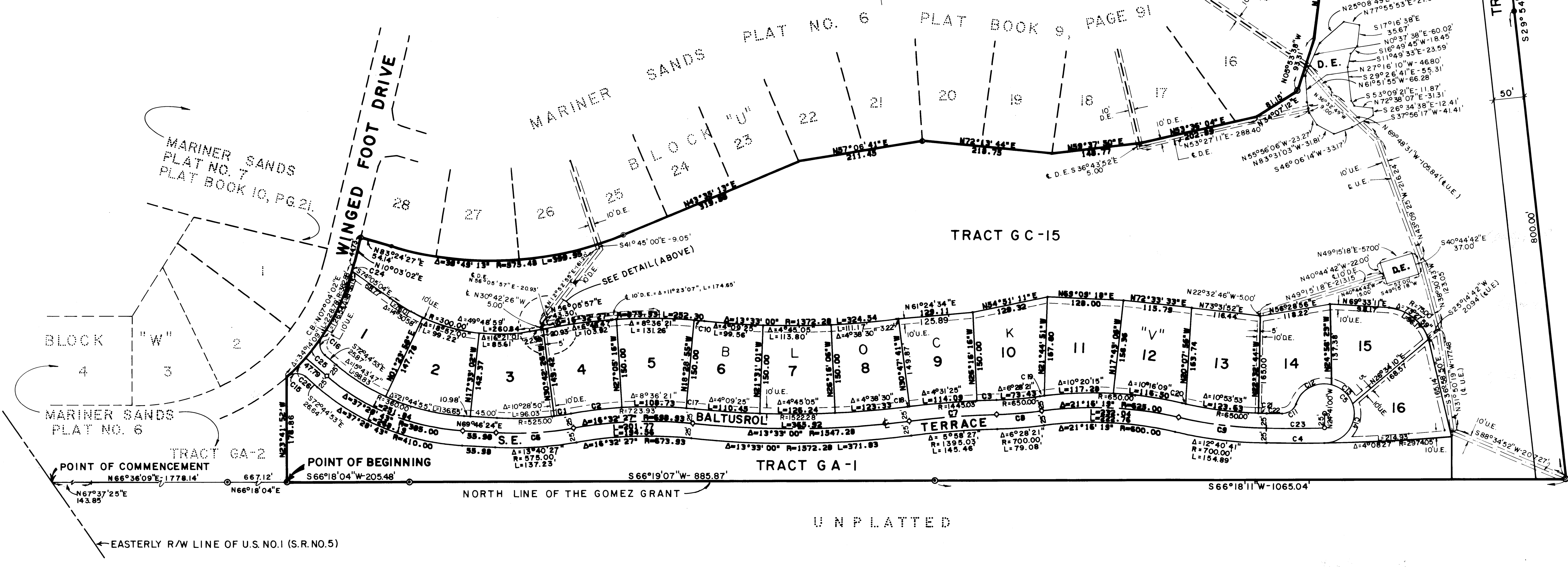


- LEGEND**
- F.R. DENOTES FUTURE RIGHT-OF-WAY.
 - DENOTES PERMANENT REFERENCE MONUMENT (P.R.M.) FOUND.
 - DENOTES PERMANENT REFERENCE MONUMENT (P.R.M.) SET.
 - DENOTES PERMANENT CONTROL POINT (P.C.P.).
 - D.E. DENOTES DRAINAGE EASEMENT.
 - U.E. DENOTES UTILITY EASEMENT.
 - (R) DENOTES A RADIAL LINE.
 - C DENOTES CURVE (SEE CURVE TABLE).
 - G.A. DENOTES GREEN AREA.
 - G.C. DENOTES GOLF COURSE.



CURVE TABLE

NO.	DELTA	RADIUS	LENGTH
C1	3°11'37"	525.00	29.26
C2	6°48'47"	723.93	95.08
C3	1°20'06"	1445.03	33.67
C4	1°52'07"	2974.05	97.00'
C5	249°50'04"	50.00	218.02
C6	13°40'27"	550.00	131.25
C7	5°53'27"	1420.03	148.07
C8	6°28'21"	675.00	76.25
C9	12°40'41"	675.00	149.36
C10	1°07'19"	873.93	17.11
C11	71°13'34"	25.00	31.08
C12	86°51'35"	50.00	75.80'
C13	37°10'50"	50.00	49.90'
C14	105°47'43"	50.00	92.32'
C15	83°04'01"	24.13	34.98
C16	82°57'31"	25.00	36.20
C17	1°07'19"	723.93	14.18
C18	0°06'56"	1445.03	2.91
C19	0°39'54"	650.00	7.55
C20	0°34'21"	650.00	6.50
C21	1°12'27"	650.00	13.70
C22	0°28'36"	2924.05	24.55'
C23	1°52'07"	2949.05	96.18
C24	1°19'28"	382.88	8.85
C25	07°02'29"	382.88	47.05
C26	06°55'59"	382.88	46.33



NOTES

BEARINGS AS SHOWN HEREON ARE REFERENCED TO MARINER SANDS PLAT NO. 6, AS RECORDED IN PLAT BOOK 9, PAGE 91, PUBLIC RECORDS OF MARTIN COUNTY, FLORIDA.

UNPLATTED